



## St. Croix County 4-H Communicator

January / February 2012

[www.uwex.edu/ces/cty/stcroix/4h/](http://www.uwex.edu/ces/cty/stcroix/4h/)

(715) 531-1930

[www.stcroixcounty4-h.org](http://www.stcroixcounty4-h.org)

Wow it is hard to believe that we are finishing another year and 2012 is just around the corner. One of the things that came to mind for me in January is New Year's Resolutions. I have not always set resolutions, but they remind me a lot of Goal Setting. The 2011-12 Annual Leader training this year had a part that focused on Goal Setting. We also talked about Goal Setting at the Club Officer training last month. Here is what was shared at the training:

To get the most from their project experience, members need to be actively involved in choosing their projects, setting their project goals, and making decisions about when and what they will do to accomplish those goals. Project leaders serve as guides for members as they set off on their project adventure. Goal setting the important first step on the road to a successful project experience.

Think about some typical project goals that members have mentioned through the years. Are these good goals? Let's apply some "goal setting" criteria to them, to see how they stand up. Good goals are measurable and have three parts:

1. Action – how you will do something
2. Results – what you are going to do
3. Timetable – when you are going to do it

Good goals also pass the *control test*. Does the member have control over the outcome of the goal, or does someone else have that control? For example, a member controls the outcome of this goal, "I want to collect, identify, and display six new species of butterflies for this year's fair," but does not control the outcome of this goal, "I want to win grand champion for my butterfly display at this year's fair." In the second goal, the judge controls the outcome, not the member.

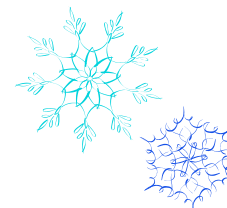
One of the goals that I have for the St. Croix County 4-H program this year is to include more youth in decision making in both clubs and committees. In a recent organization where I volunteer, I was in charge of a major program. I decided I wanted to include the 7-8<sup>th</sup> grade youth in the program that we were going to produce. The youth along with their teachers and others agreed to give it a try. The program was shared recently and I heard a few interesting comments following the event. It was shared with me that it was a very well organized program and that the youth at all grade levels really seemed to enjoy themselves. As I thought about those comments, and the process that I went through with the group, I realized that it was the shared leadership with both the 7-8<sup>th</sup> grade students along with the other teachers that made the program a success. The youth especially took ownership in the program and worked hard to make it a success. They were truly empowered and were given the chance to take the lead. So I challenge you to think about what you will do with your club (either as a leader, 4-H member or parent) or committee, to engage the youth in shared leadership and work to "Make the Best Better" in the St. Croix County 4-H program.

Happy Holidays ~ Marie Witzel



### January/February 2012

<b>Communication Reminders</b>	<b>Page 2</b>
<b>Leaders News</b>	<b>Page 2</b>
<b>Club Opportunities</b>	<b>Page 4</b>
<b>Youth News/Opportunities</b>	<b>Page 5</b>
<b>Arts/Photography</b>	<b>Page 8</b>
<b>Animal Sciences</b>	<b>Page 8</b>
<b>St. Croix County Fair</b>	<b>Page 11</b>
<b>Fairplex</b>	<b>Page 12</b>



An EEO/AA employer, University of Wisconsin-Extension provides equal opportunities in employment and programming, including Title IX and ADA.

Persons with disabilities who require alternative means for communication of program information (Braille, large print, audiotape, etc.) should contact the St. Croix County UW-Extension Office.

Requests for reasonable accommodations for disabilities or limitations should be made prior to the date of the program or activity for which it is needed. Please do so as early as possible prior to the program or activity so that proper arrangements can be made. Requests are kept confidential.

## Thank You

THANKS A MILLION to the Golden Fireballs, Rolling Hills, and True Blue 4-H clubs for sending over 25 volunteers to help make the Family Resource Center's 11<sup>th</sup> Annual Children's Holiday Shopping Spree that was held on December 3<sup>rd</sup>, 2011 in Baldwin a huge success! Also thanks to the following clubs for sending donations: Pine Lakers, Dry Run Go-Getters, Bellringers, True Blue, Sunnyside Shamrocks, Baldwin Wide Awake, Lone Pine, Riverside, Hudson Trailblazers, & Rolling Hills. It is your generosity that makes this event the great success that it is! ~ Shari Turvaville

## Thank You

Thank you to everyone who was involved with getting the 4-H Club and Committee Charter paperwork completed and turned in to our office.

## Summer 4-H Employment

This summer, St. Croix County UW-Extension will be hiring two 4-H summer assistant positions:

- \* 4-H Summer Assistant
- \* County Fair/4-H Summer Assistant

The position description, details the responsibilities for each position are posted on the UW-Extension website at <http://stcroix.uwex.edu/> Both positions are available to college students who may have an interest in exploring a career in UW-Extension. I would appreciate your help in recruiting potential applicants for the summer employment opportunities at the St. Croix County UWEX Office.

Thanks so much for your assistance. If you have any questions or need further information, please don't hesitate to call.

## Pancake Breakfast

Sponsored by: The Breeding Stock Program  
Sunday, February 26, 2012  
8:30 am - 1:00 pm  
Baldwin American Legion

Come and enjoy the all you can eat pancake breakfast that includes pancakes, eggs, sausage, potatoes and beverages. Adults can eat for \$6.00, kids ages 6-10 eat for \$3.00 and kids 5 and under eat for free.

It's not all about the food though come and bid on some great items on the silent auction. To follow the Breeding Stock Program visit:  
[www.stcroixbreedingstock.com](http://www.stcroixbreedingstock.com).

## Communicator

### Communicator Available On-Line

The 4-H Newsletter continues to be online after fall enrollment is entered into the 4-H Plus Program! Here at the UW-Extension office we are trying to do our part in helping keep our planet healthy and reduce our costs. Instead of receiving the newsletter in your mailbox, we continue to provide an electronic version of the newsletter to those that have access to internet. We will continue to send hard copy of the newsletter to those that wish to receive it. There is a form that you can fill out at the end of this newsletter, requesting that we keep sending you a hard copy.

### Communicator Deadline

Do you have news you want included in the 4-H Communicator? The deadline for having news in the Communicator is by the 15<sup>th</sup> of each month. Please make sure you keep this in mind so that we can get the Communicator out on time.

## Leader News

### St. Croix County 4-H Policy

4-H, like any other group you might join, has expectations for being a member. The St. Croix County 4-H Policy is where you will find all the rules and regulations for our 4-H program. The 2011-2012 policy has been posted on the web site. If you would like a hard copy please contact the UWEX Office. We'll be happy to provide you with one.

### 4-H Website

As you may know, St. Croix County 4-H has two websites. One is: [www.stcroixcounty4h.org](http://www.stcroixcounty4h.org) and the other is: <http://stcroix.uwex.edu/4-h-youth-development>. While this may be confusing at first, our hope is to make things easier for you. The St. Croix County 4-h.org site is for clubs and committees to share their information (for more information regarding this site, contact Jason Fouks). The other

site is through UW-Extension and will share more general county information such as the 4-H Communicator, General Organizational Leader information, Leader Council information, and other resources. For more information or suggestions for this site contact Marie Witzel at 715-531-1930 or marie.witzel@ces.uwex.edu.

### **Leader's Council Meetings**

Jan 17, 7:00 pm

Feb 21, 7:00 pm

*Ag Services & Education Center, Classroom A*

All of the Leader's Council Meetings are open meetings. Anyone is invited to attend at any time. Agenda items are due 10 days before the meeting date. If you have any items to discuss with the council, please get your agenda items to Cindy Olson or myself. The agendas and minutes are posted on the St. Croix County UW-Extension 4-H Web Site under Leaders' Council.

### **New Leader Orientations**

January 30; 6:30 - 8:30 pm

*Ag Services & Education Center, Baldwin*

All adults in the Wisconsin 4-H Program who work directly with youth on a continuing basis are required to complete the Wisconsin 4-H Youth Protection Policy which includes three steps:

- Complete a volunteer application with permission to conduct a background check
- Attend a New Leader Orientation
- Annually complete the leader enrollment form and sign a volunteer expectation form

Club organizational leaders have all the materials explaining the Youth Protection Policy. If you need the information to register for a New Leader Orientation, you can ask your club leader or access it on the 4-H web site under 4-H Leader Resources.

### **4-H New Family Welcome**

Thursday, January 26, 2012

6:00- 7:30 pm

*Ag Services & Education Center*

WELCOME new 4-H families! On behalf of the St. Croix County 4-H Program, we would like to wish you a **Happy New Year** and welcome you to the St. Croix County 4-H Program! We are very excited that you have decided to join 4-H and we believe

there is something for everyone in 4-H.

This evening is designed for all new 4-H club members (Cloverbuds included), their parents, new leaders and anyone else interested in more information on 4-H and the opportunities available.

Please join me for an evening of family fun and learning.

To make your reservation, please complete the sign up form in the back of the newsletter and return to the UW-Extension Office, or call / e-mail Melissa.

### **4-H Enrollment**

#### **Deadlines for new enrollments**

Please remember, new members enrolled by March 1 may participate in the 4-H program and County Fair without restrictions if they have met all the project guidelines for the projects in which they have enrolled. New members enrolled between March 2 and June 1 may enroll and exhibit in non-animal projects only.

### **Mini Talent Explosion**

February 18, 2012; Entries due Feb 1

*Baldwin-Woodville High School*

(Rough Draft Depending on Entries)

9-10:30 am - Speaking, Interpretive Reading and Demos

9-11 am - Arts, Crafts & Photography Judging

9:30-11:00 am - Club Mini Dramas

9-11:30 am - Club Music and On-stage Drama

Mini Talent Explosion features club events in Drama and Music and individual events in Demonstration, Speaking, Reading, Arts, Crafts and Photography. The purpose of the Talent Explosion is to recognize and celebrate the artistic accomplishments of 4-H members with the primary focus on participation and education.

Specific guidelines with the details and registration materials will be mailed directly to club organizational leaders. Everything is also available on the UW-Extension 4-H web site, click on the Mini Talent Explosion link.

# Club

## Twelve Months of Giving

The Food Resource Collaborative of St. Croix County is inviting area community organizations to participate in various monthly collections in 2011 to benefit local food pantries and charities. Choose to participate in one month, four months, or all twelve months. All contributions can be collected at your site all month and then dropped off at your local food pantry. If you have questions about the local pantry, please call Martha Mabis at (715) 531-1930.

**January and February:** "It's Cold Outside". Bring your favorite cans of soup, stew, hash, chili & crackers.

## Club Community Service Grants

The 4-H Community Service Grant Program is looking to support 4-H club's community service projects that are...

- Determined by and led by youth, with support from adults,
- Have a lasting and positive impact on the community, and involve organizations and individuals outside of 4-H as partners.

*Funding that goes directly to another organization as a charitable contribution is not available.*

Your club can ask for as little as \$50 and up to \$150 for your community service project, however, the grant cannot cover the entire cost of a project. A total of \$2,000 dollars is available for distribution.

You can request a copy of the Community Service Grant application from your county 4-H Youth Development staff or by downloading a copy from the Wisconsin 4-H Foundation website at [www.uwex.edu/ces/4h/foundation/grantscomm.cfm](http://www.uwex.edu/ces/4h/foundation/grantscomm.cfm). Applications are available in a word or adobe acrobat editable format. Applications must be submitted prior to January 28, 2011.

## Wisconsin Military Helmet Caps and Lap Blankets

Roberts Ribbon Reapers is inviting all of the 4-H clubs in St Croix County to join us in making Helmet

Caps and Lap Blankets for our Wisconsin military service members.

Our goal is to have a shipment out to these individuals or groups in November of 2012. This gives us a year to make 100's of the helmet caps and blankets. Helmets provided to our military do not have padding or insulation, the extra layer these helmet caps provide is much appreciated.

*As of Dec. 15<sup>th</sup> we have had 4 clubs get information about making blankets and capes, they are Lone Pine, Baldwin Wide Awake, Double Good and Golden Fireballs. We have 6 blankets and 25 hats already. We raised \$189 at our achievement banquet for this project and Lone Pine has donated \$50.*

How can you be involved?

~ Invite us to come to your next club meeting and let us explain this project to your club

~ Provide us with names of your 4-H families military service members that we can send these too

~ Crochet or knit helmet caps (we will provide you with the pattern and can also provide you with the yarn)

~ Tie lap blankets, double and single layer blankets are needed (we can provide you with material)

~ Donate money to purchase the materials (yarn and blanket material) and to ship them to our military service members

~ Donate yarn or material

Our hope is that we can involve all of St Croix County 4-H clubs, 4-H alumni, 4-H families and community members in this community service project.

Contact Patti Robertson at: [robertsribbonreapers@hotmail.com](mailto:robertsribbonreapers@hotmail.com) or

Lani Sahnnow at: [lanisahnow@yahoo.com](mailto:lanisahnow@yahoo.com) (715-928-1055 after 5:00) for more information and to schedule our visit to your next club meeting.

## **Youth News/ Opportunities**

### **St. Croix County 4-H Ambassadors**

January 14; 7 - 11 pm  
Roberts Park Building

The Ambassadors will be hosting their annual Emerald Game Night. This year's theme is "Hollywood". Come dressed as your favorite actor/actress or character. There will be prizes for the best costume.

There will be lots of fun table games, group games, music and sliding for all to participate, plus plenty of snacks to munch! The event is open to 4-H members and their non 4-H friends in grades 7 and above. The 2012 Ambassadors will be introduced at 8:00 along with the new Junior Ambassadors.

Come meet them all, as they represent you, and promote our 4-H program throughout the year.

### **St. Croix County 4-H Showchoir**

Any 4-H member in 6-13<sup>th</sup> grades is welcome to apply to the 4-H Showchoir. There is no audition, only a willingness to learn music to sing and have fun moving while singing. Applications can be gotten either from Melissa at the UWEX office, or e mailing the director, Nancy Burman at [music\\_mommy@hotmail.com](mailto:music_mommy@hotmail.com) Application deadline is April 1, 2012. There is a \$100 fee to be in the choir, plus members will need to purchase dance shoes, and some clothing items.

Day camp for learning and polishing the entire show will be **July 9 - 13, 2012**; this is the week before the fair. There will be other dates for rehearsals earlier in May & June to learn the music, with locations to be announced. We are in the process of setting up the performance schedule. Please contact Nancy if you have any questions regarding rehearsal and performance dates.

The Choir is open to boys AND girls from all 4-H clubs. We have a great time singing together, learning to be coordinated with the dance steps, and performing at the county and state fairs.

Come join the St. Croix County 4-H Showchoir for a great summer experience as part of your 4-H program!!

### **THE SHOWCHOIR IS LOOKING FOR MUSICIANS:**

The St. Croix County 4-H Showchoir needs a bass guitar player and a sound person to aid in the 2012 shows and performances. The sound tech. can learn about the equipment, and will still need to come to all performances. If you are interested in either position, please contact director, Nancy Burman at [music\\_mommy@hotmail.com](mailto:music_mommy@hotmail.com)

### **Host Families Sought for One-Month 4-H Japan and Korea Exchange Programs**

Even though it's cold and the ground should be covered in snow, it's time to begin thinking about next summer and the possibility of your family hosting a foreign exchange student for one month. Families are needed to host Japanese and Korean exchange students, ages 12 to 18, for four weeks this summer as part of the international exchange program sponsored by 4-H. The Japanese and Korean teenagers will stay with their American host families from approximately July 24 to August 2, 2011.

You only need a willingness to share your home and your world. There is no need to know the Japanese or Korean language. The students have all studied English and are anxious to use and improve it. They need to be provided with a bed, not their own room, and share your family life. "The program gives host families a chance to share their culture, friendship and family life with an exchange student and at the same time learn about Japanese or Korean everyday life," said Kay Hobler, Wisconsin 4-H Outreach Specialist. "The home-stays only last a month during summer vacation, but the effects last a lifetime."

There are approximately 40-50 students hosted in Wisconsin alone each summer. Host applications and brochures about the program are available on the internet site <http://www.uwex.edu/ces/4h/onlinpro/international.cfm> Application deadline is February 15. You may contact Marie Witzel at 715-531-1930, or Nancy

Burman, County Coordinator, at 715-549-6712 or [music\\_mommy@hotmail.com](mailto:music_mommy@hotmail.com) for further information. Both families have hosted numerous foreign exchange students and we would be very happy to visit your club with a presentation about hosting.

**4-H Camp Counselors Needed**  
Applications due Feb 1  
Interviews scheduled as needed  
Ag Services & Education Center

Do you enjoy working with younger members in your club? Have you had experience planning activities for younger members? Have you worked with other members your age to organize group activities for your club? If you answered yes to any of these questions, think about applying to be a summer camp counselor. It is one of the most fun LEADERSHIP DEVELOPMENT opportunities you can be part of.

How do you get to be a camp counselor? Send a completed application to the UWEX office by the deadline. We'll let you know what time you need to be there for interviews! Selected camp counselors need to be able to attend the overnight camp counselor training & planning.

Applications are available on our UW-Extension web site. Go to 4-H Forms/and click on Applications. Or return the interest form in the back of the newsletter to receive an application by mail.

**2012 PRCA Ram Rodeo -  
Queen Candidates Wanted!**

The Rodeo committee is looking for Queen Candidates for the 2012 St. Croix Valley PRCA Ram Rodeo. Candidates must be 16 years of age, have good riding skills and have access to a "parade" trained horse (not spooked by crowds, flags etc.). PRCA eligible candidates (16 – 23 years of age) can advance to state and national competition with the potential of winning scholarships.

Entry forms and additional information can be obtained by contacting Theresa Hoffman (715) 265-4805 <[thoffman@centurytel.net](mailto:thoffman@centurytel.net)>; or Kelly Neidermyer (715) 781-1110 <[pullingfools@yahoo.com](mailto:pullingfools@yahoo.com)>. The deadline for entry is April 1, 2012.

## **Badlands**

Badlands would be happy to be a vehicle for 4-H fundraising. Available dates would be Wednesday, Thursday, or Friday nights in January and February. Members and their friends will sign in upon arrival with their name and club association.

Badlands will return half of ticket prices to the 4-H Club. Badlands would like the money to be used in some way for the good of the County 4-H system such as Renovations for Generations. The Kinney's will keep a tally of clubs attending and let them know their share of funds contributed. For more information or for ticket prices contact either the Extension Office or Badlands directly.

## **Wisconsin 4-H & Youth Conference Applications**

**ATTENTION** 4-H members grades 7-10!! Don't miss a GREAT opportunity to travel to Madison for the 2012 Wisconsin 4-H & Youth Conference. You can enjoy a week of leadership learning and fun on the UW-Madison Campus, with over 500 youth from around the state!

The Wisconsin 4-H & Youth Conference is an experience that can create a lifetime of "4-H memories." All you need is a simple application form to apply. Invite a 4-H friend to join you in applying. St. Croix County is able to send a number of youth!

Here's how the process will work:

4-H members interested in the opportunity can get the form from the web or from the Extension Office. Application forms are due in the Extension Office by February 1<sup>st</sup>. Interviews will be held in February, probably on February 21<sup>st</sup>. Applicants will be notified prior to their interview.

## **Key Award for 4-H Leadership ME forms due Mar 1**

The Key Award is one of the most prestigious leadership awards presented to 4-H members. It is a program that recognizes members who have demonstrated consistent growth in their 4-H involvement, developed and applied their leadership skills and actively participated in the leadership of their 4-H club and community.

Eligibility requirements include: Graduation from high school, Completed at least 6 yrs of 4-H, Completed at least 1 year of Youth Leadership

Key Awards will be presented to the recipients at the County Fair. ME forms & the Key Award Cover Letter are available on the UW-Extension web site or return the interest form in the back of the newsletter.

## **St. Croix County 4-H Leaders Scholarships Applications due Mar 1**

There are eight (8) scholarships available. A member may receive only one (1) scholarship sponsored by the St. Croix County 4-H Leaders' Association. Members pursuing a degree in nursing may also want to apply for the Betty Jean Utecht Forgivable Loan. There is a separate application for the Betty Jean Utecht Forgivable Loan.

Any St. Croix County 4-H member who is a graduating high school senior or has graduated from high school with a GPA of 2.5 or above is eligible.

### **General Selection Criteria:**

- Active in all areas or 4-H involvement
- Demonstrated leadership beyond local club level
- Sense of direction in furthering education
- 2.5 grade average

Four of the scholarships are for any post high school education. One scholarship is targeted to a teaching related field and one for study in a health field. The Forgivable Loan is for study in nursing.

Again this year: **4-H Horse Project \$250 Scholarship**....Financial support for any field of study. To a graduated senior who has been in good standing with the horse project for 3 years.

Again this year: **Tom Dorsey \$250 Scholarship**....Financial support for any field of study.

All applications can be found online at [www.uwex.edu/ces/cty/stcroix](http://www.uwex.edu/ces/cty/stcroix).

## **State-wide 4-H Scholarships Applications must be postmarked by February 24, 2012**

The Wisconsin 4-H Foundation offers several

scholarships for members seeking post high-school education. Specific information and the application form can be found on the Wisconsin 4-H Foundation Web Site at:

<http://www.uwex.edu/ces/4h/foundation/scholarship.cfm>

Following is a brief description of the types of scholarships available:

4-H Animal Sciences Scholarship — One scholarships awarded for \$1,000 each (enrolled in the College of Agriculture & Life Sciences at any of the UW-campuses, 2.5 grade point, and from a rural community.

4-H Natural Resources and Environmental Education—One scholarship awarded for \$500 (requires active participation in Natural Resources and Environmental Education project for at least one year) enrolled or enrolling in University College or Tech School.

4-H Community Service Scholarship---Two scholarships awarded for \$750 (requires demonstration of commitment to community service. Preference will be given to residents of Clark County)

4-H Leadership Achievement Scholarship—Two scholarships awarded for \$1,000 (requires 3 years minimum active participation in 4-H youth leadership and enrolled or planning to enroll in a university, college, or technical school.

Betty Krueger Memorial 4-H Scholarship - One scholarship awarded for \$500. (requires minimum of 5 years of 4-H enrollment, enrollment at any Wisconsin college or university, majoring in agriculture or family living. Preference will be given to Dane County residents)

Wisconsin 4-H Agricultural Scholarship—One scholarship awarded for \$1,000. (requires minimum of 1 year of 4-H enrollment, majoring in some aspect of ag and include explanation of how they plan to use their education, must have a farm background or been involved in ag-related 4-H activities, current grade point average of 3.0 on a 4.0 scale)

4-H Horse Scholarship—Five scholarships awarded for \$1,000. Applicant must have been a WI 4-H Horse & Pony project member for 3 years, must be enrolled or planning to enroll in a university, college or technical school. Up to 25 additional points will be given to youth who have volunteered at Wisconsin State 4-H Horse Association activities and events

and/or held youth leadership positions within the Wisconsin State 4-H Horse Association.

## YELL

(Youth Engaged in Learning about Leadership)

February 11, 2012; 9:00 am - 3:00 pm

UW - Eau Claire Campus

Registration due January 20

Be a college student for a day! Come make new friends while strengthening your leadership skills through interactive sessions, networking opportunities and on-campus service.

The cost is \$20.00 and is open to youth in grades 6 - 12. For more information visit the following website: <http://buffalo.uwex.edu/yell>.

## Arts / Photography

### Wisconsin 4-H Arts Programs & State Group Opportunities

**State 4-H Teams.** I know that many of 4-H'ers in Grades 9 - 13 would be interested in applying to be a member of one of the state 4-H Groups or Art Team, Drama Company, Showcase Singers, or Photo Team. The new application process is done on-line and is due along with audition materials on January 28.

4-H ArtBeat North will be February 24-25, 2012 at the Beaver Creek Reserve in Eau Claire County. Applications are due January 27, 2012.

4-H ArtBeat South will be March 23-24 at Upham Woods. Applications are due February 10, 2012. Details: <http://4h.uwex.edu/events/4-Hartbeat.cfm>.

### Photography Project Meetings

We are going to have a meeting on January 21<sup>st</sup> of 2012 at 10:00 am at the Ag Services and Education Center in Baldwin. This meeting is for those that are interested in helping to set up meetings; letting me know what type of speakers you would like and what you want to learn more about. I would also like some input on other activities that the members of the project would like to do. Neither one of the Photo Challenges went over so we need to come up with a plan. I am still looking for pictures for Photo Boards.

Please e-mail them to me if you are able. Pictures that you brought to the fair last year are fine or any new ones that you have taken. Up to 10 pictures per person is fine.

We will also be having a meeting on February 11<sup>th</sup>. Again it will be at 10:00 am and it will be at the Ag Services and Education Center in Baldwin. We will be having a guest speaker and doing a Photo Activity.

**Will each Club Leader please e-mail me the person who is the photography leader and their e-mail address for your club? This will help with the e-mails too!**

Leaders and photography members please remember to e-mail me at [jacobsenfarm@netscape.com](mailto:jacobsenfarm@netscape.com) and I will be happy to help you with a photography meeting or just answering questions. With our busy schedules it is not always easy to make a County Meeting so I am more than happy to help you and/or your club out!!

## Animal Sciences

### Meat Animal Committee Meeting

January 10, 2012; 7:30 pm

February 14, 2012; 7:30 pm

Ag Services & Education Center

All of the Meat Animal Committee meetings are open meetings. You are welcome to attend anytime. Please call Tom Grandt (246-6114) to get items on the agenda.

### Breeding Livestock Committee

January 9, 2012; 7:00 pm

February 6, 2012; 7:00 pm

Ag Services & Education Center

All meetings are open to anyone who is interested in the program. Please feel welcome to attend at any time.

If you have any questions about the breeding livestock program, please feel welcome to contact Mary Liddle, 715-796-5685 or [rockyknobfarm@centurytel.net](mailto:rockyknobfarm@centurytel.net).

A new year has begun and the St. Croix County Breeding Stock Program has new Executive officers. We are excited for what the year has to bring and look forward to meeting everyone.

Chair: Mary Liddle and Vice-Chair: Warren DeBoer  
Secretary: Dawn Reinsberg  
Treasurer: Shelly Schmidt  
Sheep Chair: Jeff Liddle/Co-Chair: Mary Liddle  
Goat Chair: Lori DeBoer/Co-Chair: Rachel Ackley  
Swine Chair: Cathy Smith/Co-Chair: Rachel Ackley

Please visit our website:  
[www.stcroixbreedingstock.com](http://www.stcroixbreedingstock.com) for information on how to contact us and what is going on with the program. You will find the forms you will need, dates of clinics and shows, the rest of the committee members and any other information we may need to get to you. Also follow us on Facebook. Search St. Croix County Breeding Stock Program and the click "like".

The St. Croix Breeding Stock Program is looking for adults and youth (8<sup>th</sup> grade or older) to join the committee. **We are in need of beef people** but anyone wanting to join is always welcome. What are you expected to do as a member? It is pretty simple. Attend monthly meetings which are held the first Monday of the month. Help with fundraisers which right now consist of a pancake breakfast in February and some type of a fall fundraiser. Help plan, organize, and run the Dust 'Em Off Jr. Livestock Show in June. Help out as needed at the fair (examples: check in animals, help at show time, set up if things if needed). Help with clinics for the 4-h and FFA kids. Be there to answer any questions that may come along during the year.

### **Livestock Meeting**

Sunday, January 29; 1:00 - 4:00 pm  
St. Croix Central High School

Each exhibitor is strongly encouraged to attend with a parent as we will be going over the rules for the Meat Animal and Breeding Stock Committees. After the rules session, we will break up in to groups (by specie) and have presentations on animal selection and management. If you have any questions, please call Lori DeBoer at 715-263-4201 or by email at [deboerlori@yahoo.com](mailto:deboerlori@yahoo.com).

## **4-H Meats Judging Contest**

February 18, 12:30

UW Madison Muscle Biology Lab

The state 4-H Meats Judging Contest is scheduled for February 18 at the University of Wisconsin – Madison. Registration is from 12:30 to 1 p.m. with the contest starting at 1 p.m. The highest scoring senior team will participate in the National 4-H Meat Judging Contest in Manhattan, KS. The second place senior team may participate in the National Western 4-H/FFA Meat Judging contest in Fort Collins, Colorado.

All of the information pertaining to this contest is located on the Extension Youth Livestock Website <http://fyi.uwex.edu/youthlivestock/programs/4hmeatscontest>.

The deadline for registration is Friday, February 10, 2012. The registration form is on the website.

If you have any questions please contact, Bernie O'Rourke, Extension Youth Livestock Specialist at [borourke2@ansci.wisc.edu](mailto:borourke2@ansci.wisc.edu) or 608-263-4304.

## **Livestock Quiz Bowl**

March 3, 2012

UW-Madison Animal Science Dept  
Entries Due: February 24

Livestock Bowl is a quiz competition where all the questions are about beef, sheep, swine and meat goat topics and students use a buzzer in order to answer the questions. Teams compete in a double elimination format by giving oral answers to questions posed by a moderator. Each match has both an individual and toss-up question round. The teams are divided into three age divisions. The junior division is made up of four members who are under 14 years of age as of January 1, 2012. The senior team is for teams of four members who are all 14 years of age or older as of January 1, 2012. A mixed team must contain at least one youth from each age division.

Competition in Livestock Quiz Bowl encourages members to develop a more complete knowledge of animals and related subjects. This contest provides an educational program for all project members, including those who may not own a project animal, and provides a way to develop self-confidence. The winning 4-H senior team will represent

Wisconsin at the National 4-H Livestock Quiz Bowl competition in Omaha, NE at the AKSARBEN Livestock Exhibition.

The cost for each team is \$6 per youth and is due at registration at 9:00 am. For more information please visit the website:

<http://fyi.uwex.edu/youthlivestock/livestock-quiz-bowl> or by contacting Bernie O'Rourke at 608-263-4304 or [borourke2@ansci.wisc.edu](mailto:borourke2@ansci.wisc.edu).

### **Ag Truths not Tails Conference**

January 20-21 Upham Woods, WI Dells

Registration Extended: January 11, 2012

Interested in learning and practicing skills to join the next generation of communicators for Wisconsin's livestock and dairy industry? Mark your calendar for the Ag Truths, Not Tails conference, coordinated by the University of Wisconsin-Extension. Enrollment is open to youth ages 13 to one year past high school in dairy, beef, sheep, swine and goat project areas.

Bring a team of youth and adults to these interactive networking sessions focused on animal welfare, led by leaders in the livestock and dairy industry. Alice in Dairyland, Katie Wirkus will keynote the event. Speakers from UW-Extension, World Dairy Expo, Vita Plus and others will lead your experience.

**This is a great opportunity for county educational credits.** For more information, visit the conference website at <http://fyi.uwex.edu/agtruthsnottails/>. Registration materials can be found at <http://fyi.uwex.edu/agtruthsnottails/registration-materials/>. Contact Bernie O'Rourke, Extension Youth Livestock Specialist, with questions at 608-263-4304 or [borourke2@ansci.wisc.edu](mailto:borourke2@ansci.wisc.edu).

### **State Fair Information:**

Wisconsin State Fair

Aug 2-12, 2012

West Allis, WI

Beef, Sheep & Swine Interest Forms due Feb 1

Dairy Interest Forms due Mar 1

Interested in exhibiting at the State Fair? Send in the State Fair Interest Form at the end of this newsletter to the UWEX Office so we can send you the appropriate information when it arrives.

BEEF: The new process for identifying state fair beef can be found at

[http://wistatefair.com/fair\\_competitions/news\\_updates.html](http://wistatefair.com/fair_competitions/news_updates.html) make sure to look for the 2012 Market steer updates.

SWINE: We have not yet received the dates and location for the central weigh-in for swine. The specifics will be mailed directly to members who return the State Fair Sign Up Interest Form. You can also view the information on

[www.uwex.edu/ces/animalscience/youthlivestock/index.cfm](http://www.uwex.edu/ces/animalscience/youthlivestock/index.cfm)

SHEEP: There may also be a central weigh-in for sheep; however, I don't yet have the specific information regarding dates/location/time. We will send it directly to those who have indicated an interest when it arrives. You can also view the information on

[www.uwex.edu/ces/animalscience/youthlivestock/index.cfm](http://www.uwex.edu/ces/animalscience/youthlivestock/index.cfm)

DAIRY: State Fair Dairy interest forms will be dated when they arrive. If limited dorm space requires cuts be made in the size of the Dairy delegation, preference will be given to those members who sent in their interest form by the deadline.

**ALL LIVESTOCK EXHIBITORS:** Please remember, State Fair requires for all Junior Fair entries, the signature of an FFA advisor, (if the youth is an FFA member) or the advisor of the appropriate organization to verify the affiliation of the youth to the respective organization for participation at the Fair.

### **Dairy Quiz Bowl**

Saturday, January 28, 2012

9:45 Registrations

The Dairy Quiz Bowl will be held at the Portage Elementary School (John Muir School). Members must be 9-18 years of age as of 1/1/12. Registrations are due before January 8, 2012 along with the \$10.00 team registration fee.

For more information contact the Extension office or <http://www.uwex.edu/ces/dairyouth/qbowl.php> for rules and registration form.

## Dairy Project Heifer Calf Award

The St. Croix County 4-H Dairy Committee is sponsoring a Registered Dairy Calf Award to one outstanding 4-H member. Interested members are asked to write a short essay (100 words or less) on "What would owning your own registered dairy calf mean to your 4-H experience?" Applicants are also asked to rank their breed preference, and to list their involvement in 4-H and dairy project activities.

**Applications are due to the UW-Extension office by April 1<sup>st</sup>**, and applicants may be asked back for an interview with the selection committee. The goal of the committee is to have the winner selected by May 1<sup>st</sup>, and the committee will also pay registration transfer fees.

Application is open to 4-H members of all ages. This is an excellent opportunity to add a registered dairy calf to your 4-H project experience. Be sure to thank your 4-H Dairy Committee members for making this possible!

## State Fair Dairy Promotion Board Scholarships Available

The Wisconsin State Fair Dairy Promotion Board will award three \$1,000 scholarships, for use during the second semester of the 2012-2013 school year, to third or fourth-year college students pursuing dairy-related or food science degrees at one of Wisconsin's four-year universities. Two additional \$1,000 scholarships will be made available to high school seniors planning to pursue a dairy-related or food science degree at one of Wisconsin's four-year universities or students studying in a two-year, technical school program related to dairy or food science.

Applicants will be evaluated on involvement and leadership in ag-related activities, scholastic achievement, and career objectives. Finalists will be interviewed in mid-April, with the recipients to be announced at the 2012 Wisconsin State Fair.

The application is available at [www.wistatefair.com/fair\\_competitions/dairy\\_promotion\\_board.html](http://www.wistatefair.com/fair_competitions/dairy_promotion_board.html). Application deadline is April 2. For more information contact Katy Katzman at 262-903-6727 or [katzman@idcnet.com](mailto:katzman@idcnet.com).

## Youth Horse Committee

January 2, 7 pm

February 6, 7 pm

Ag Services & Education Center

All meetings are open to anyone who has in interest in the horse program. If you have items for the agenda, please contact Cheri Morton at 715-688-6103 or [tmorton@baldwin-telecom.net](mailto:tmorton@baldwin-telecom.net).



**St. Croix County**  
Fair

## County Fair Premium Checks

2011 County Fair Premium checks were included in the club awards packets. Checks were distributed to families through their clubs. The fair premium checks are void on January 1. Questions can be directed to Dick Sullwold at 246-5272.

## Recycled Ribbon Program

Have you given a thought as to what to do with all your St. Croix County Fair Ribbons? How about recycling them? If you have any ribbons, instead of throwing them away, we would love them back to reuse. Of course, they need to be in good condition and not have any writing on them. Please drop them off at the Extension Office or give them to your club leader. We will accept Jr. Fair and Open Class ribbons. If you aren't interested in keeping your ribbons, please consider donating them back to the fair. Budgets continue to be tight, everything helps.

## 2012 St. Croix County Fair Wednesday July 18 - Sunday July 22

Conference Judging will commence Wednesday, July 18, 2012 at 12:00 pm and end at 7:00 pm. All exhibits must be in place by 8:00 pm. The dog show will be the only animal show on Wednesday, July 18, 2012 commencing at 6:00 pm.

Thursday judging involves the music judging (time not to be determined at this time) and school exhibit judging commencing at 9:00 am. The sheep show (weigh in 10:00 am to 12:00 pm) at 4:00 pm. The

goat show commencing at 6:00 pm rounds off the judging for Thursday. Livestock check-in is also on Thursday commencing at 9:00 am and ending at 8:00 pm.

Friday judging involves swine, beef and rabbits all commencing at 9:00 am. The Gymkhana show will commence at 12:00 pm.

Saturday judging involves the junior dairy, horse dressage and poultry all commencing at 9:00 am. The senior dairy show will commence at 12:30 pm. Youth horse will have their show at 2:30 pm. The llama show will commence at 4:00 pm.

Sunday concludes our fair with the horse show at 8:00 am. Then all exhibits will be released at 4:00 pm that day.

The foods fair will remain the Saturday before the fair commencing at 11:00 am and ending at 3:00 pm. Again this year, the cat show will also be this day with setup at 1:00 pm and judging to commence at 3:00 pm.

## *Fairplex*

### **Friends of the Fairplex -Update**

Our dream has moved to reality with the Fair Board's construction of Dairy Barn #1 for the 2011 Fair – thanks to the hard work and generosity of many, plus a loan pool from area banks. Thanks to our partnership with the Dairy Committee and continued strong support from many quarters, the loan principle has been cut in half in less than a year! Our goal for 2012 is to complete raising the funds to retire the loan on Dairy Barn #1 and move towards Dairy Barn #2 for the 2012 Fair – together we can make this happen!!

How do we get there?

1. Successful conclusion to the Fall Commodity Roundup. Our thanks to all who have worked on this. Reception has been very positive! Currently the 2011 drive has generated over \$22,000 in donations & pledges. We are continuing to solicit cull cow & scrap metal donations – stay tuned!! Want to help - contact Terry Mitchell, (715) 246-5502 or Chris Libbey (715) 246-5626.

2. May Fair Event & Sale: Last year's event netted \$17,000 above expenses, thanks to the generosity and hard work of many. The combined total of the 2010 & 11 event is \$47,000. The event was a great Mother's Day Weekend experience for about 200 attendees. The Dairy Committee and the Friends of the Fairplex are currently planning the 2012 event. Keep tuned for updates – suggestions of how we can "make the best better" are welcome.

3. Renovations for the Generations Raffle: The Raffles to date have been very successful creating a lot of publicity, clearly demonstrating the willingness of 4-Her's to support the project and, to date, raising \$33,500 above expenses. The 2011 Raffle is in the early planning stages – keep tuned.

4. Club support: Many of the Clubs have been consistent supporters of the Raffle. Additionally several clubs have held their own fund raisers. In the past year the Roberts Ribbon Reapers 4-H Club, Bell Ringers 4-H Club, Sunnyside Shamrocks & Forest Timberwolves clubs have made significant donations outside of our fundraisers totaling \$8,000. These donations are greatly appreciated – we welcome club donations of any size.

5. Employer Matching Grants: 3M & Allina Healthcare are both set up to match employee community volunteer hours with cash grants. This is a great way to leverage your volunteer work. Ask your employer if they offer similar matching grants and contact Chris Libbey for assistance in setting up (715) 246-5626.

6. Grants, business, & foundation grants: Friends of the Fairplex is continuing to work on raising funds. Collectively with the Dairy Committee we have had a great year raising over \$100,000. Suggestions of potential donors are always welcome. Your support truly makes a difference!!

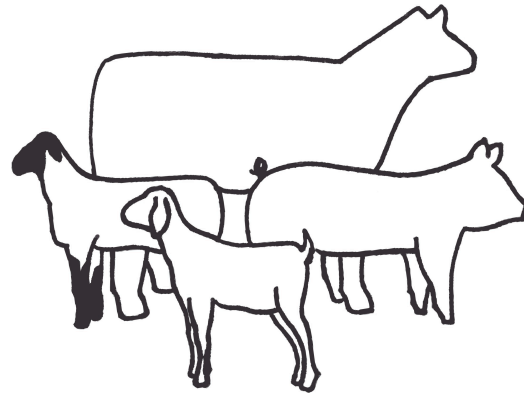
### **Help keep our Mailing List Up-to-Date**

If you have a change of address or are receiving our newsletter and would like to be taken off our mailing list or prefer to view it online, please contact our office at 715-531-1932.





**St. Croix County  
Breeding Stock Program Presents**



# Annual Pancake Breakfast

**All you can eat**

**Silent Auction**

**Sunday, February 26, 2012**

**8:30am - 1:00pm**

**Baldwin American Legion Post 240  
410 Maple St, Baldwin, WI**



**\$6 Adults  
\$3 Kids Age 6-10  
Kids 5 & Under Free  
[www.stcroixbreedingstock.com](http://www.stcroixbreedingstock.com)**



## 4-H NEW FAMILY WELCOME

WELCOME new 4-H families! On behalf of the St. Croix County 4-H Program, we would like to wish you a **Happy New Year** and welcome you to the St. Croix County 4-H Program! We are very excited that you have decided to join 4-H we believe there is something for everyone in 4-H.

As you begin to learn more about the program, I understand that it can be a bit overwhelming at times, and I would like to help you better understand all the opportunities available. So, please join me for an evening of family fun and learning. I will be holding our "NEW" 4-H Family Welcome on Thursday, January 26 from 6:00-7:30 p.m. at the Extension Office.

The evening is designed for all new 4-H club members (Cloverbuds included), their parents, new leaders and anyone else interested in more information on 4-H and the opportunities available. There will be information about the St. Croix County 4-H program, and time for questions and answers.

To register, please complete and mail the form below, email, or call Melissa to reserve your spot. Registration is due on January 18<sup>th</sup>. We hope to see you there!

### 4-H New Family Orientation Workshop Registration January 26th 6:00-7:30 p.m.

Name: \_\_\_\_\_

Number Attending: \_\_\_\_\_

Address: \_\_\_\_\_

City/Zip: \_\_\_\_\_

4-H Club: \_\_\_\_\_ Phone: \_\_\_\_\_

Return to St. Croix County 4-H Youth Development, 1960 8<sup>th</sup> Ave, Suite 140  
Baldwin, WI 54002 by **January 18<sup>th</sup>**.

4-H Interest and Sign-Up Form

**Yes! I want to keep receiving hard copies of the 4-H newsletter!**

We are continuing with our 4-H newsletters on-line so if you don't have easy access to the internet or if you just prefer the hard copy, here is your chance to keep receiving the newsletter in the mail. Just fill out the form below and return it to the UW-Extension Office.

I would like to receive a hard copy of the 4-H newsletter:

Name (Parents): \_\_\_\_\_

Address: \_\_\_\_\_ City/Zip: \_\_\_\_\_

Name \_\_\_\_\_

Address \_\_\_\_\_ City/Zip: \_\_\_\_\_

- Please Send a Camp Counselor Application
- Please Send a St. Croix County 4-H Scholarship Application
- Please Send a ME Form and Cover Letter for Key Award
- Please Send a State 4-H Scholarship Application
- Please Send a YELL Registration Form

**State Fair DAIRY Interest Form**

Due March 1

Name \_\_\_\_\_ 4-H Club \_\_\_\_\_

Address \_\_\_\_\_ City/Zip \_\_\_\_\_

Grade \_\_\_\_\_ Phone \_\_\_\_\_ E-mail \_\_\_\_\_

Have you attended the State Fair as a dairy exhibitor before?  Yes  No

**State Fair LIVESTOCK Interest Form**

Due February 1

Name \_\_\_\_\_ 4-H Club \_\_\_\_\_

Address \_\_\_\_\_ City/Zip \_\_\_\_\_

Grade \_\_\_\_\_ Phone \_\_\_\_\_ E-mail \_\_\_\_\_

Please check the species you are interested in exhibiting:  Swine  Sheep  Beef

Have you attended the State Fair as a livestock exhibitor before?  Yes  No

**Mail Completed Form to:** UW-Extension, 1960 8<sup>th</sup> Ave., Suite 140, Baldwin, WI 54002

# January 2012

Sunday	Monday	Tuesday	Wednesday	Thursday	Friday	Saturday
1	2 7:00 pm – Horse Committee Mtg. (Baldwin)  <b>OFFICE CLOSED</b> New Year's	3	4	5	6	7
8	9 7:00 pm – Breeding Stock Committee Mtg. (Baldwin)	10 7:30 pm – Meat Animal Committee Mtg. (Baldwin)	11 <b>Due</b> – Ag Truths not Tails Registration	12	13	14 7-11 pm – Ambassador Emerald Game Night (Roberts)
15	16 <b>OFFICE CLOSED</b> Martin Luther King Jr. Day	17 7:00 pm – Leader's Council Mtg. (Baldwin)	18	19	20	21 10:00 am – Photography Meeting (Baldwin)
22	23	24	25	26 6:00 pm – 4-H New Family Welcome (Baldwin)	27 <b>Due</b> – ArtBeat North Application	28 <b>Due</b> – State 4-H Art Team Apps. 9:45 am – Dairy Quiz Bowl (Portage)
29 1:00-4:00 pm – Livestock Meeting (SCC High School)	30 6:30 pm – New Leader Orientation (Baldwin)	31			<i>Baldwin = Ag Services and Education Center 1960 8<sup>th</sup> Ave; Baldwin</i>	

← Ag Truths not Tails Conf. (WI Dells) 20-21 →

# February 2012

Sunday	Monday	Tuesday	Wednesday	Thursday	Friday	Saturday
			1 <b>Due</b> – 4-H Camp Counselor Applications <b>Due</b> – 4-H Youth Conference Applications	2	3	4
5	6 7:00 pm – Breeding Stock Committee Mtg. (Baldwin) 7:00 pm – Horse Committee Mtg. (Baldwin)	7	8	9	10 <b>Due</b> – ArtBeat South Application <b>Due</b> – 4-H Meats Judging Contest App.	11 9:00 am – YELL (Eau Claire) 10:00 am – Photography Meeting (Baldwin)
12	13	14 7:30 pm – Meat Animal Committee Mtg. (Baldwin)  <i>Valentine's Day</i>	15 <b>Due</b> – International Host Applications	16	17	18 9:00 am – Mini Talent Explosion 12:30 pm – 4-H Meats Judging Contest (Madison)
19	20 <b>OFFICE CLOSED</b> President's Day	21 7:00 pm – Leader's Council Mtg. (Baldwin)	22	23	24 <b>Due</b> – State 4-H Scholarship Apps. <b>Due</b> – Livestock Quiz Bowl Entry  ArtBeat North (Eau Claire Cty) 24-25	25
26 8:30 am-1:00 pm – Pancake Breakfast (Baldwin Legion)	27	28	29	<b>March 1</b> – <b>Due</b> - New Member Enrollments (Animal projects) <b>Due</b> – Key Award Apps and St. Croix Scholarship Apps		