

DEPT 26 - CLOTHING & CLOTHING REVUE

CLOTHING

- All garments exhibited are to be the work of this 4-H year. All entry tags are to be pinned securely on the front upper right side of the garment. Clothing exhibits will be released on Sunday at 4 pm
- **IMPORTANT** - All clothing exhibits must be accompanied by a 3x5 card with the following: fiber content, intended use, type of interfacing (if used), intended care, pattern brand and number, or 4-H literature page number. Also include the number of years you have been sewing. If you have done anything different from standard procedure, describe & tell why. Failure to provide a card will result in a lower ribbon.
- Select an exhibit appropriate to your age and ability. The exhibit suggestions listed below are only suggestions. Exhibitors may bring any item which uses hand or machine sewing.
- You may enter your style review garment as a clothing exhibit.

Exhibit suggestions: Any item from Sew Quick Literature, Beach or bath robe, nightgown or pajamas, skirt or pant skirt, blouse or top, jumpsuit, vest, shorts, pants, dress, jumper, costume, jumper with blouse or top, simple jacket, garment for another individual, garment for party wear, sweat shirt, sweat suit, samples of seam finishes, samples of different hemming procedures, steps of putting in a zipper, etc.

CLASS A

Premiums: Blue \$2.25 Red \$2.00 White \$1.75 Pink \$1.50

-Open to members in the Let's Sew Project, Grades 4 - 5

Lot No.

- | | |
|--|--|
| <ol style="list-style-type: none"> 1. Exhibit made by member 2. Exhibit made by member 3. Exhibit made by member 4. Exhibit made by member | <ol style="list-style-type: none"> 5. Exhibit made by member 6. Exhibit made by member 7. Exhibit made by member 8. Exhibit made at summer 4-H Clothing Workshop by member |
|--|--|

Reserve Champion - Ribbon
Champion – Ribbon

CLASS B

Premiums: Blue \$2.25 Red \$2.00 White \$1.75 Pink \$1.50

- Open to members in the Let's Sew Project, Grades 6 - 7

Lot No.

- | | |
|--|--|
| <ol style="list-style-type: none"> 1. Exhibit made by member 2. Exhibit made by member 3. Exhibit made by member 4. Exhibit made by member | <ol style="list-style-type: none"> 5. Exhibit made by member 6. Exhibit made by member 7. Exhibit made by member 8. Exhibit made at summer 4-H Clothing Workshop by member |
|--|--|

Reserve Champion - Ribbon
Champion – Ribbon

CLASS C

Premiums: Blue \$2.25 Red \$2.00 White \$1.75 Pink \$1.50

- Open to members in Let's Sew Project, Grades 8 - 9

Lot No.

- | | |
|--|--|
| <ol style="list-style-type: none"> 1. Exhibit made by member 2. Exhibit made by member 3. Exhibit made by member 4. Exhibit made by member | <ol style="list-style-type: none"> 5. Exhibit made by member 6. Exhibit made by member 7. Exhibit made by member 8. Exhibit made at summer 4-H Clothing Workshop by member |
|--|--|

Reserve Champion - Ribbon



JUNIOR FAIR

Champion – Ribbon

CLASS D

-Open to members in Let's Sew Project, 10th Grade and over
Lot No.

1. Exhibit made by member
2. Exhibit made by member
3. Exhibit made by member
4. Exhibit made by member
5. Exhibit made by member
6. Exhibit made by member
7. Exhibit made by member
8. Exhibit made at summer 4-H Clothing Workshop by member

Reserve Champion - Ribbon

Champion – Ribbon

CLASS E - HORSE CLOTHING

Premiums: Blue \$2.25 Red \$2.00 White \$1.75 Pink \$1.50

- Open to members in the Horse Project or Let's Sew Project

- Requirements - 3x5 card must accompany garments with the following information: fiber content, intended care, intended use, type of interfacing used if interfacing is necessary, preparation of findings.

Exhibit suggestions: grooming apron or kit, riding boot carrying bag, hunt coat, article made for a horse, horse halter bridle bag, chaps, western shirt, etc.

Lot No.

1. Exhibit made by member
2. Exhibit made by member
3. Exhibit made by member

Reserve Champion Exhibit - Ribbon

Champion Exhibit - Ribbon

RESERVE GRAND CHAMPION CLOTHING EXHIBIT (CLASSES A – E) - ROSETTE

GRAND CHAMPION CLOTHING EXHIBIT (CLASSES A – E) - ROSETTE

CLASS F – FASHION DECISIONS

Premiums: Blue \$2.25 Red \$2.00 White \$1.75 Pink \$1.50



-Open to members in the Fashion Decisions Project

Exhibit suggestions: poster or display on color and fashion, clothing first aid kit, decorated clothing item, poster showing fad vs. fashion, good grooming tips, personal color chart, mending techniques, any exhibit from project book

Lot No.

1. Exhibit made by member Grades 4 – 6
2. Exhibit made by member Grades 4 – 6
3. Exhibit made by member Grades 4 – 6
4. Exhibit made by member 7th Grade and over
5. Exhibit made by member 7th Grade and over
6. Exhibit made by member 7th Grade and over

Reserve Champion - Ribbon

Champion – Ribbon

CLOTHING REVUE

Premiums: Blue \$3.00 Red \$2.50 White \$2.25 Pink \$2.00

The Revue will be judged previous to the fair in Blue, Red, White and Pink groupings. **All members must take part in the style show at the Fair.** Entries will be judged on suitability of the garment to the individual, general appearance of the costume and accessories and fit.

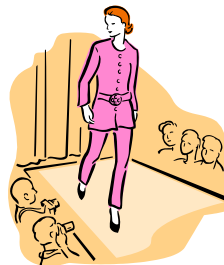
NOTICE: A garment entered in Style Revue **MAY ALSO** be entered in Classes A-E Clothing for judging at the Fair, but must be listed as a separate entry on the entry form.

CLASS G

Open to Cloverbuds:

Lot No.

1. Beach or bath robe
2. Nightgown or pajamas
3. Skirt, split skirt, pant skirt, or gauchos
4. Blouse, top, or boy's shirt
5. Sweatshirt or T-shirt
6. Vest
7. Shorts, pants, capris, or clam-diggers
8. Shorts or pants and top (sweat suit included)
9. Dress
10. Costume
11. Knitted or crocheted cap or scarf
12. Knitted, crocheted, or sewn purse. To be modeled with a garment it accessorizes/accents



Reserve Champion - ribbon

Champion – ribbon

CLASS H

Open to members in Grades 3 – 5

Lot No.

1. Beach or bath robe
2. Nightgown or pajamas
3. Skirt, split skirt, pant skirt, or gauchos
4. Blouse, top, or boy's shirt
5. Sweatshirt or t-shirt
6. Vest
7. Shorts, pants, capris, or clam diggers
8. Shorts /pants and top
9. Sweat suit or lounge wear (top and bottom)
10. Dress
11. Costume
12. Garment for another individual (to be modeled by “other”)
13. Knitted or crocheted garment
14. Knitted, crocheted, or sewn purse. To be modeled with a garment it accessorizes/accents
15. Purchased outfit (include written card on cost, care, plan for wearing, why garment was chosen)
16. Combination of purchased and sewn outfit or altered/embellished purchased outfit (include a written card on cost, care, plan for wearing, why garment was chosen)

Reserve Champion – ribbon

Champion – ribbon



CLASS I

Open to members in Grades 6 – 8

Lot No.

1. Beach or bath robe
2. Nightgown or pajamas
3. Skirt, split skirt, pant skirt, or gauchos
4. Blouse, top, or boy's shirt
5. Sweatshirt or t-shirt
6. Vest
7. Shorts, pants, capris, or clam diggers
8. Shorts /pants and top
9. Workout, lounge wear, or sweat suit (pants and top)
10. Dress
11. Costume
12. Garment for special occasion, semi-formal
13. Garment for another individual (to be modeled by "other")
14. Knitted or crocheted garment (top or bottom)
15. Knitted, crocheted, or sewn purse. To be modeled with a garment it accessorizes/accents
16. Purchased outfit (include written card on cost, care, plan for wearing, why garment was chosen)
17. Combination of purchased and sewn outfit or altered/embellished purchased outfit (include a written card on cost, care, plan for wearing, why garment was chosen)

Reserve Champion - ribbon

Champion – ribbon

CLASS J

-Open to members 9th Grade and over

1. Beach or bath robe
2. Nightgown or pajamas
3. Skirt, split skirt, pant skirt, or gauchos
4. Blouse, top, or boy's shirt
5. Sweatshirt or t-shirt
6. Vest
7. Shorts, pants, capris, or clam diggers
8. Shorts /pants and top
9. Workout, lounge wear, or sweat suit (pants and top)
10. Dress
11. Coat, outerwear, or jacket
12. Costume
13. Garment for special occasion, semi-formal or formal
14. Garment for another individual (to be modeled by "other")
15. Garment made from non-traditional material (duct tape, etc)
16. Knitted or crocheted garment (top or bottom)
17. Knitted, crocheted, or sewn purse. To be modeled with a garment it accessorizes/accents
18. Purchased outfit (include written card on cost, care, plan for wearing, why garment was chosen)
19. Combination of purchased and sewn outfit or altered/embellished purchased outfit (include a written card on cost, care, plan for wearing, why garment was chosen)

Reserve Champion – ribbon

Champion – ribbon

RESERVE GRAND CHAMPION CLOTHING REVUE EXHIBIT - ROSETTE

GRAND CHAMPION CLOTHING REVUE EXHIBIT – ROSETTE